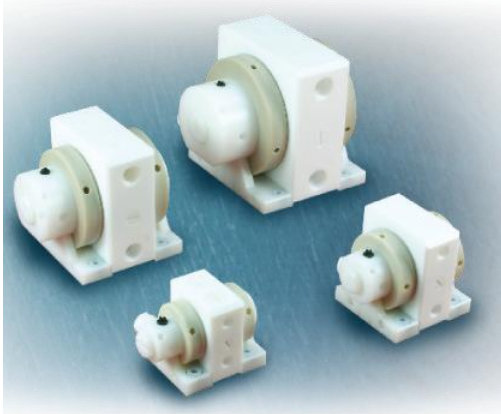


ALMATEC PUMP FUTUR 100

1¼" PLASTIC



WETTED HOUSINGS

Material	Ship Wt
PTFE/PE	17.6 kg (38.8 lbs)
PE	11.8 kg (26.0 lbs)

NON-WETTED HOUSINGS

Description	Material
Center Section	PTFE-TFM, UPPE
Air Valve	PETP

ELASTOMER OPTIONS

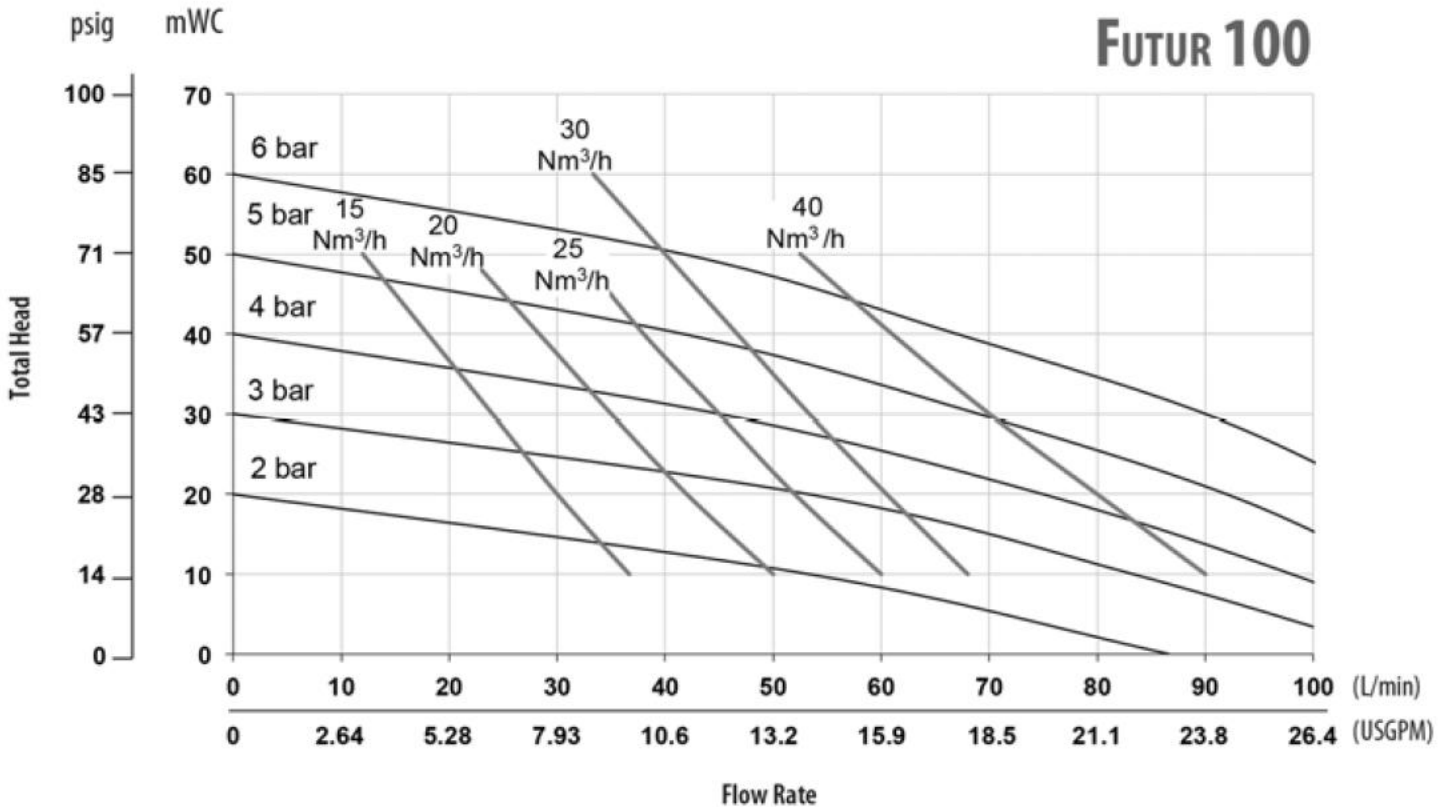
Material	Temperature limits
PTFE	+4.4 (+40) to +104.4 (+220) °C (F°)

MAX FLOW RATE: 100 LPM (26.42 GPM)

MAX PRESSURE: 6 BAR (87.02 PSI)

MAX SUCTION LIFT CAPABILITY:

4 m (13.1') Dry, 9 m (29.5 ') Wet



HOLLAND AIR PUMPS BV

De Scheper 260
NL 5688 HP OIRSCHOT
THE NETHERLANDS

PHONE

+31 (0)499 551 000

FAX

+31 (0)499 551 005

VAT

NL8033.13.123.B01

ING-BANK ACC

NL79 INGB 068 29 36 022

ONLINE

WWW.HOLLANDAIRPUMPS.NL
INFO@HOLLANDAIRPUMPS.NL

CHAMBER OF COMMERCE

ROTTERDAM 24.252.831